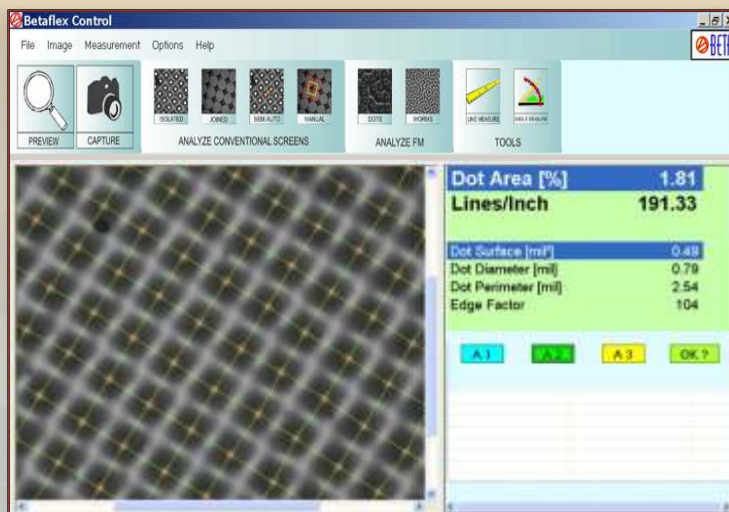


# B E T A F L E X

## CONTROL



- **Capture**  
Halftones on Flexo Plates, Masks & Film
- **Analyze**  
Dot Area, Bar Code Width  
Screen Ruling, Screen Angle
- **Correct & Control**  
Halftones & more, for better,  
more Profitable Printing



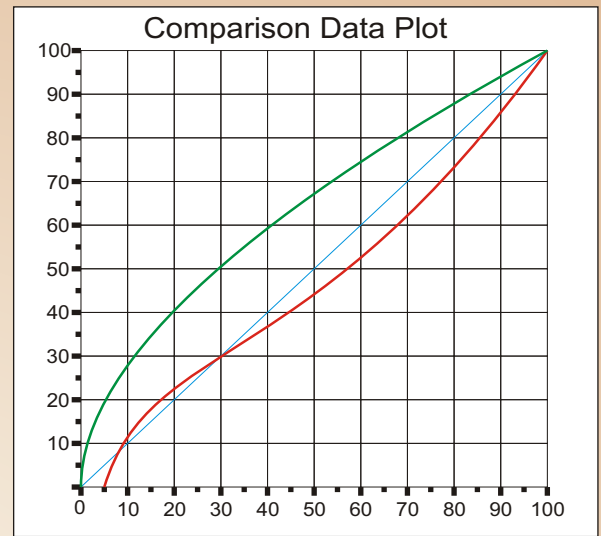
**Measure AM, FM  
(Stochastic)  
& Hybrid Screening,  
Portably on  
Plates of Any Size**



**Hand Held Flexo  
Plate, Mask,  
& Film Analyzer  
in One Easy Device**

# Betaflex Control

Measure & Control AM/FM  
Stochastic, ISO Certification,  
Device Calibration with database



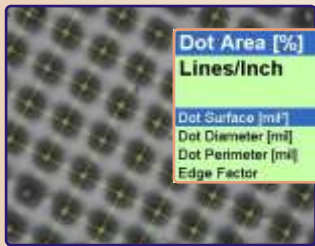
Tone Reproduction Curve

DotPercentArea [%]	Lines/inch	Dot Area [µm²]	Dot Diameter [µm]	Dot Perimeter [µm]	EdgeFactor
21.48	125.03	13.74	4.18	13.55	107
21.74	125.03	13.90	4.21	13.65	107
21.50	125.03	13.77	4.19	13.58	107

Data Capture & Statistics

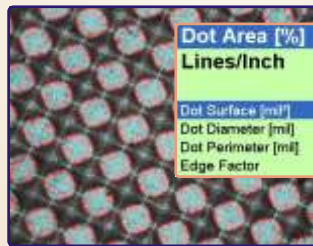
Datatype	Average	STD
Avg.DotPercent Area	21.58	0.10
Avg.DotLinesPerInch	125.03	0.00
Avg.Dot Area	13.80	0.06
Avg.Dot Diameter	4.19	0.01
Avg.Dot Perimeter	13.60	0.03
Avg.Dot EdgeFactor	107.00	0.00

Capture, Analyze, Correct



Dot Area [%]	1.37
Lines/Inch	157.85
Dot Surface [µm²]	0.55
Dot Diameter [µm]	0.84
Dot Perimeter [µm]	2.70
Edge Factor	106

Highlights



Dot Area [%]	38.97
Lines/Inch	156.18
Dot Surface [µm²]	15.08
Dot Diameter [µm]	4.51
Dot Perimeter [µm]	16.51
Edge Factor	138

Midtones



Dot Area [%]	83.00
Lines/Inch	146.14
Dot Surface [µm²]	36.88
Dot Diameter [µm]	7.03
Dot Perimeter [µm]	21.02
Edge Factor	90

Shadows

## Functions

Dot Area%, Dot Diameter, Screen Ruling, Line Width, (display inch or mm), Dot Diameter, Angle, Digital zoom 4x, Bar Code width

## Materials

Flexo Plates  
Masked Materials  
Film

## Screen Patterns

AM  
FM (Stochastic)  
Hybrid

## System Requirements

Windows 7, XP, Vista,  
Processor min. 1GHz, 1GB RAM  
2 USB2 ports, CD Drive  
Min. screen resolution 1024x768

## Parts Included

Plate reader with USB cable,  
Software, Dongle, ISO Calibration target, Lightbox with 12 volt power supply

## Interface/Power

USB powered,  
Lightbox; external  
12 volt power supply

## Special Feature

Auto calibration  
with ISO Target

## Specifications

Sensor: 1.3 MB  
Analysis Area: 3mm<sup>2</sup>  
Screen Rulings: 23-85L/cm  
58-216 lpi, Lightbox with external



Measure a Variety of Different Plate Types



Portable Carrying Case  
Includes All Parts



Hand Held for Plates of Any Size