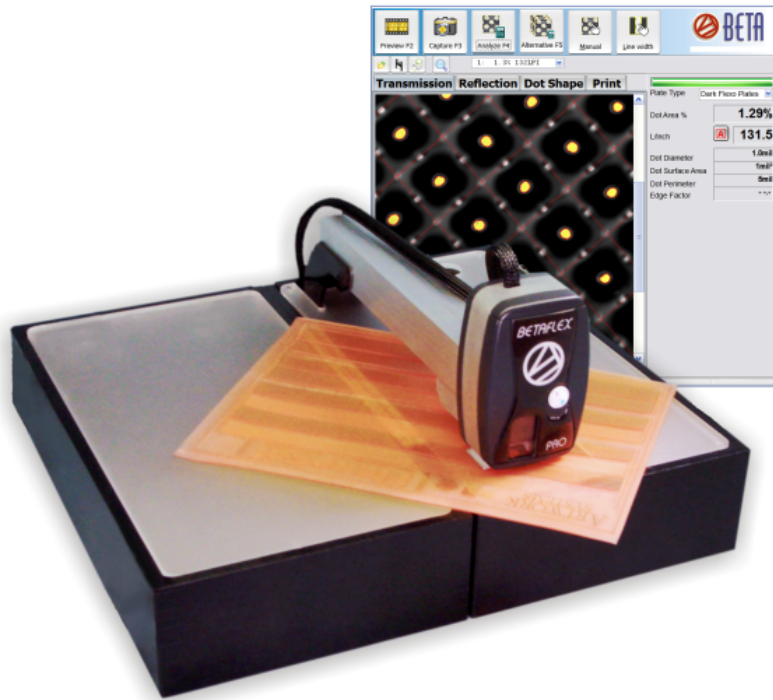


BETA FLEXPRO

Flexo System Analyzer



SAVE • TIME • MONEY • MATERIAL

Measure: HD FLEXO

1% Highlights & Better

Features:

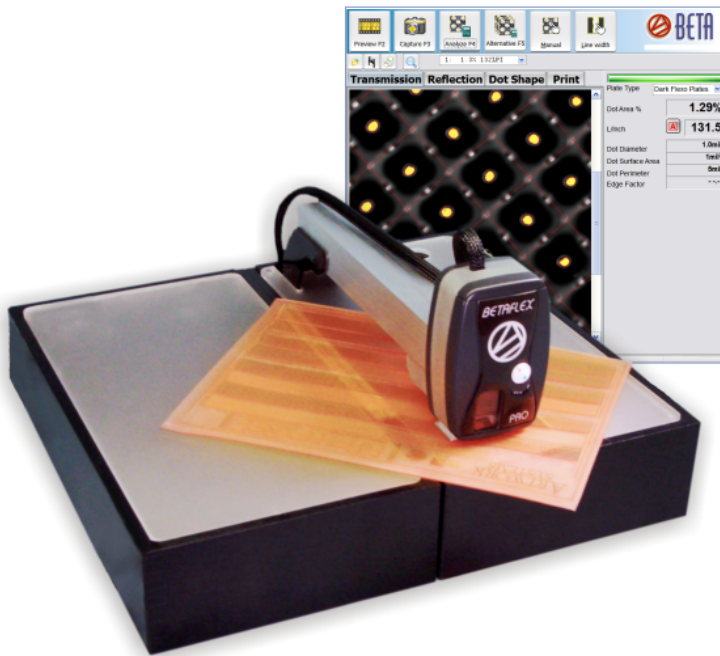
- 3-D Imaging
- Color Separation & Analysis
- Image to Image Comparison
- Flexo Plates
- Laser Masks
- Offset Plates
- Prints • Film

Beta Industries - The Quality Control Company

707 Commercial Avenue, Carlstadt, NJ 07072 USA, 800-272-7336, www.betascreen.com

BETA FLEXPRO

Flexo System Analyzer



SAVE • TIME • MONEY • MATERIAL

The Benefits Detect process variation before expensive errors propagate through the system.

Automatic data collection, plotting, and statistical analysis keeps the operator informed and the process on target. The built-in calibration function and target system provides maximum accuracy and inter-instrument agreement across the plant and around the world.

Value Propositions

- **Quality Control of Flexo Plates**
 - **TREMENDOUS SAVINGS IN TIME AND MONEY**
 - **Early detection of production errors**
 - Avoid future problems in production process
 - Save ink and paper by running the press only with quality-assured plates
 - **Reduce Plate Waste** by reducing the number of iterations to obtain a corrected plate
 - **Improved calibration** of Flexo CTP devices
 - **Traceable data** software automatically stored in searchable format

Benefits to the Company

- **Greatly reduce wasted time and material**
 - Eliminate press downtime due to plate quality
 - Reduce subjective image adjustment on press
- **Increase print quality**
 - Improve color fidelity and tone gradation
 - Document quality level for the customer
- **Meet ISO standards**
 - Relational database stores Quality Control data
 - Support traceability recommendations of ISO

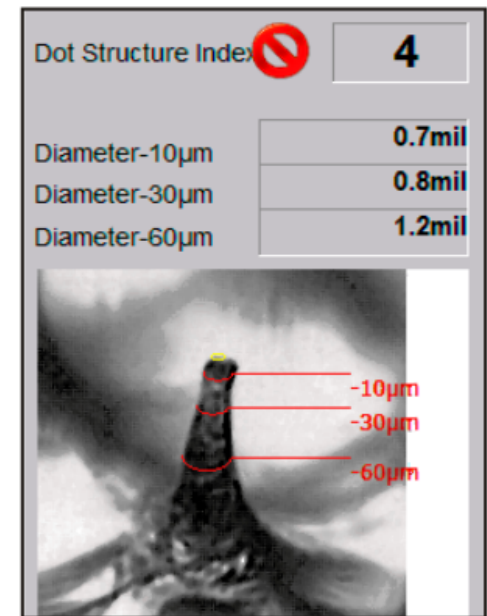


DOT STRUCTURE INDEX

FOR SUPERIOR HIGHLIGHT DOTS

**Topographical Visualization
and 3-D Imaging Assures
Highlight Dot Integrity**

Catch Expensive Errors
Before they Propagate
Through the System



BETA FLEXPRO

Flexo System Analyzer

Betaflex Pro Imaging
248 lpi (97 l/cm) at .54%
w/accompanying 3D Dot
Structure Printability
Index. **Image 2** indicates
an ideal, repeatable dot
shape for printing fine
highlight halftones.

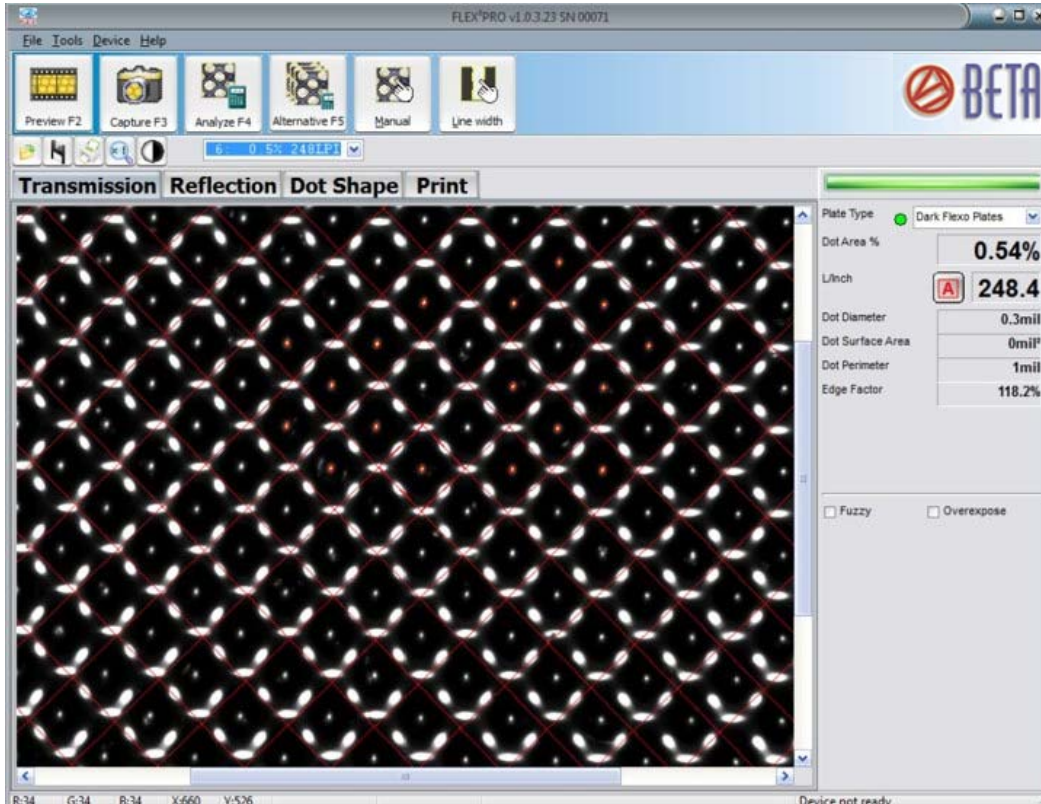
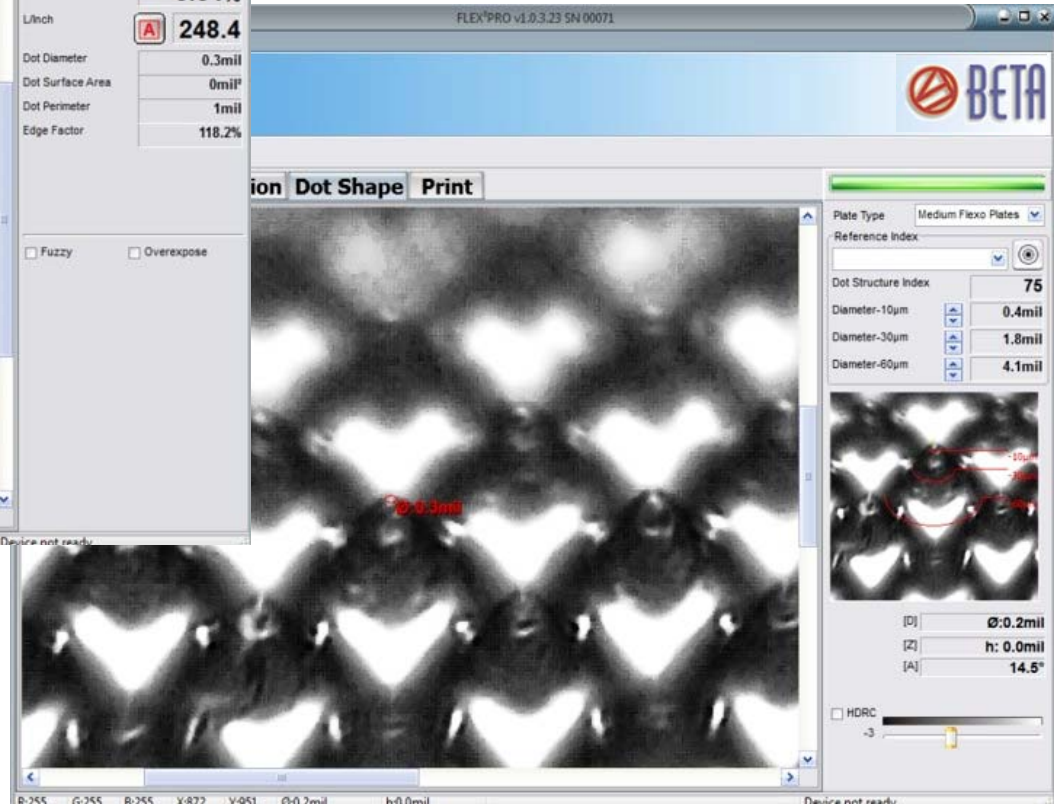


IMAGE 2



BETA FLEXPRO

Flexo System Analyzer

File Tools Device Help

Preview F2 Capture F3

Transmission Reflection Dot Shape Print

Plate Type Medium Flexo Plates

Reference Index: 3D Sample 3

Dot Structure Index: 17

Diameter-10µm: 0.9mil

Diameter-30µm: 1.4mil

Diameter-60µm: 2.1mil

X:674 Y:486 h:0.0mil

Device not ready

Dot Structure Index calculation

In order to offer an easy-to-understand function for checking the minimum dot, we have created the Dot Structure Index. The index determines the correlation between the current dot under test and a previously approved minimum dot. The Index is classified in three categories:



This dot is generally too small or poorly formed

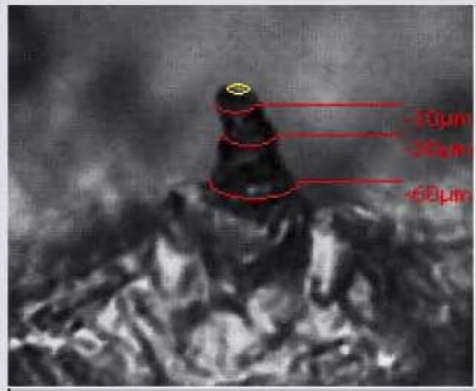
it is not very likely that this dot will be sturdy enough to print during the entire run of the job.

- Dot stability = -1 if the dot is not vertical but slanting to one side
- Dot stability = -1 if the shoulder is tapered inwards
- Dot stability between 1 and 9 : Dot shape is regular but probably too steep

Plate Type


Stability Index 

Diameter-10µm	<input type="text" value="19.7µm"/>
Diameter-30µm	<input type="text" value="25.1µm"/>
Diameter-60µm	<input type="text" value="42.6µm"/>

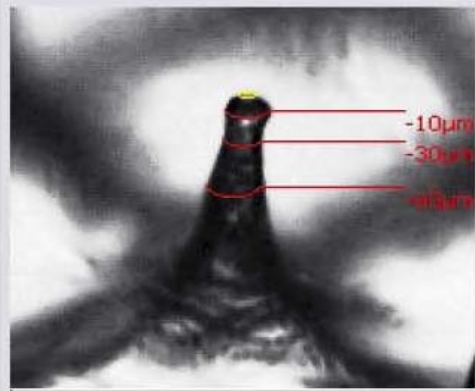


Slanting dot example. -10, -30, and -60 markers represent the depth below the yellow index in microns

Plate Type


Stability Index 

Diameter-10µm	<input type="text" value="20.8µm"/>
Diameter-30µm	<input type="text" value="16.4µm"/>
Diameter-60µm	<input type="text" value="25.1µm"/>

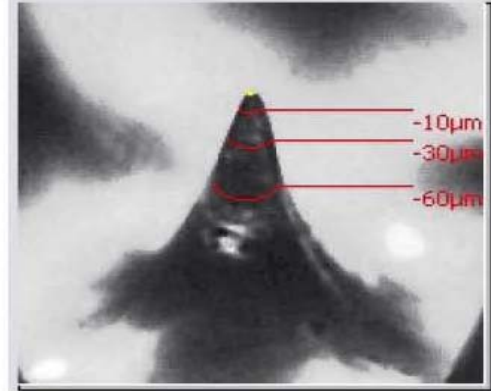


Waist diameter at -30 microns depth is smaller than head diameter at -10 microns

Plate Type

Stability Index 


Diameter-10µm	<input type="text" value="10.9µm"/>
Diameter-30µm	<input type="text" value="20.8µm"/>
Diameter-60µm	<input type="text" value="31.7µm"/>

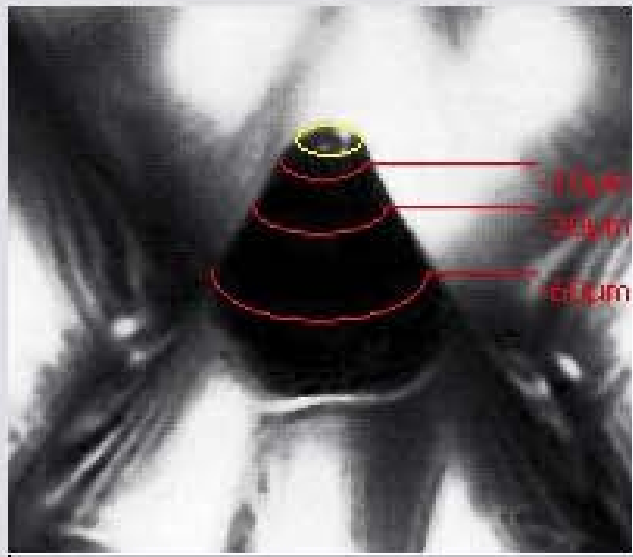


Properly formed dot but probably too thin overall




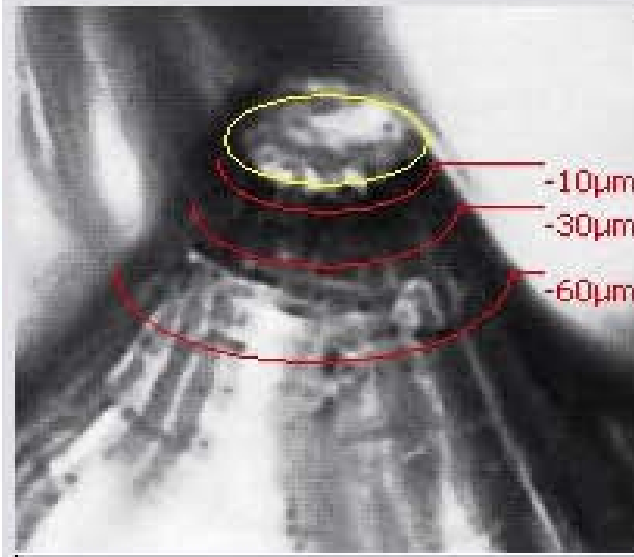
It is quite probable that this dot will print reliably

Plate Type	Standard Plates <input type="button" value="v"/>
Stability Index	 40
Diameter-10µm	30.6µm
Diameter-30µm	47.0µm
Diameter-60µm	76.5µm



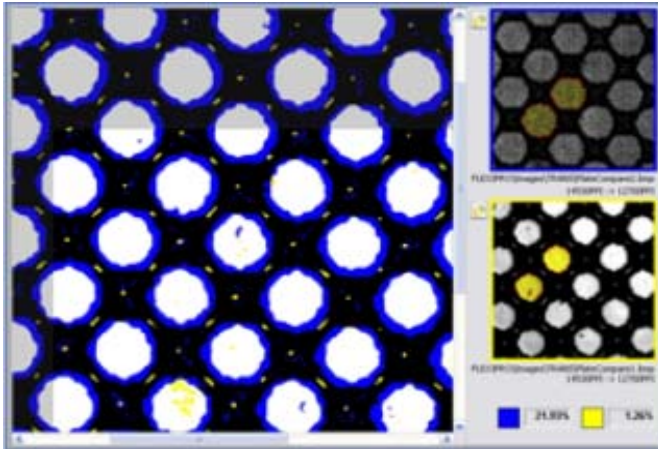
A green flag tells you that it is quite probable that the dot will print reliably.

Plate Type	Standard Plates <input type="button" value="v"/>
Stability Index	 115
Diameter-10µm	76.6µm
Diameter-30µm	94.0µm
Diameter-60µm	141.0µm



In this case a simple visual check would tell you immediately that the dot is sturdy enough to print reliably.

Direct Image Comparison



Function automatically rotates, scales, and overlays images to display and measure differences in dot area. See dot size change from mask to plate to print, plant to plant, or week to week. See changes in the process or materials, the plant or the method before expensive errors propagate through the system.

BETA FLEXPRO

Flexo System Analyzer

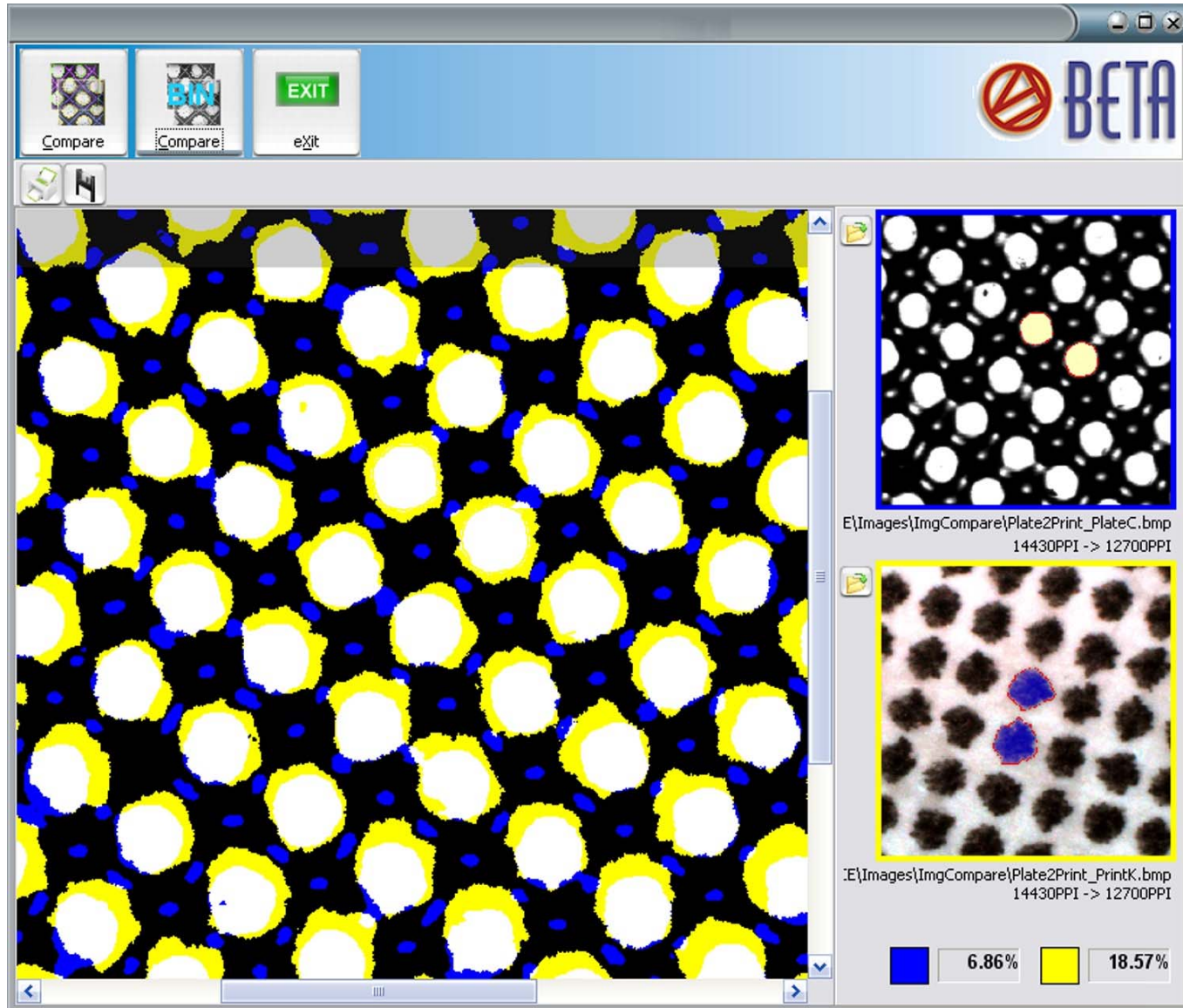
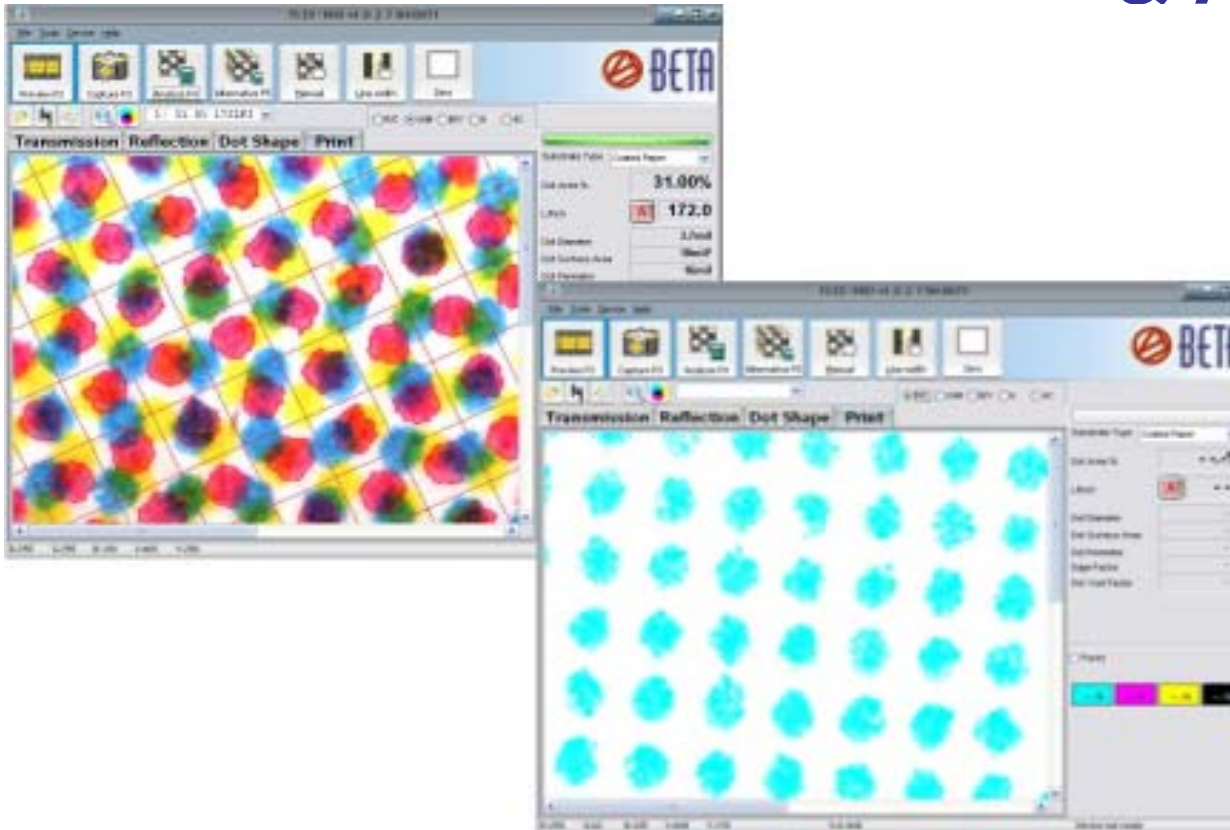


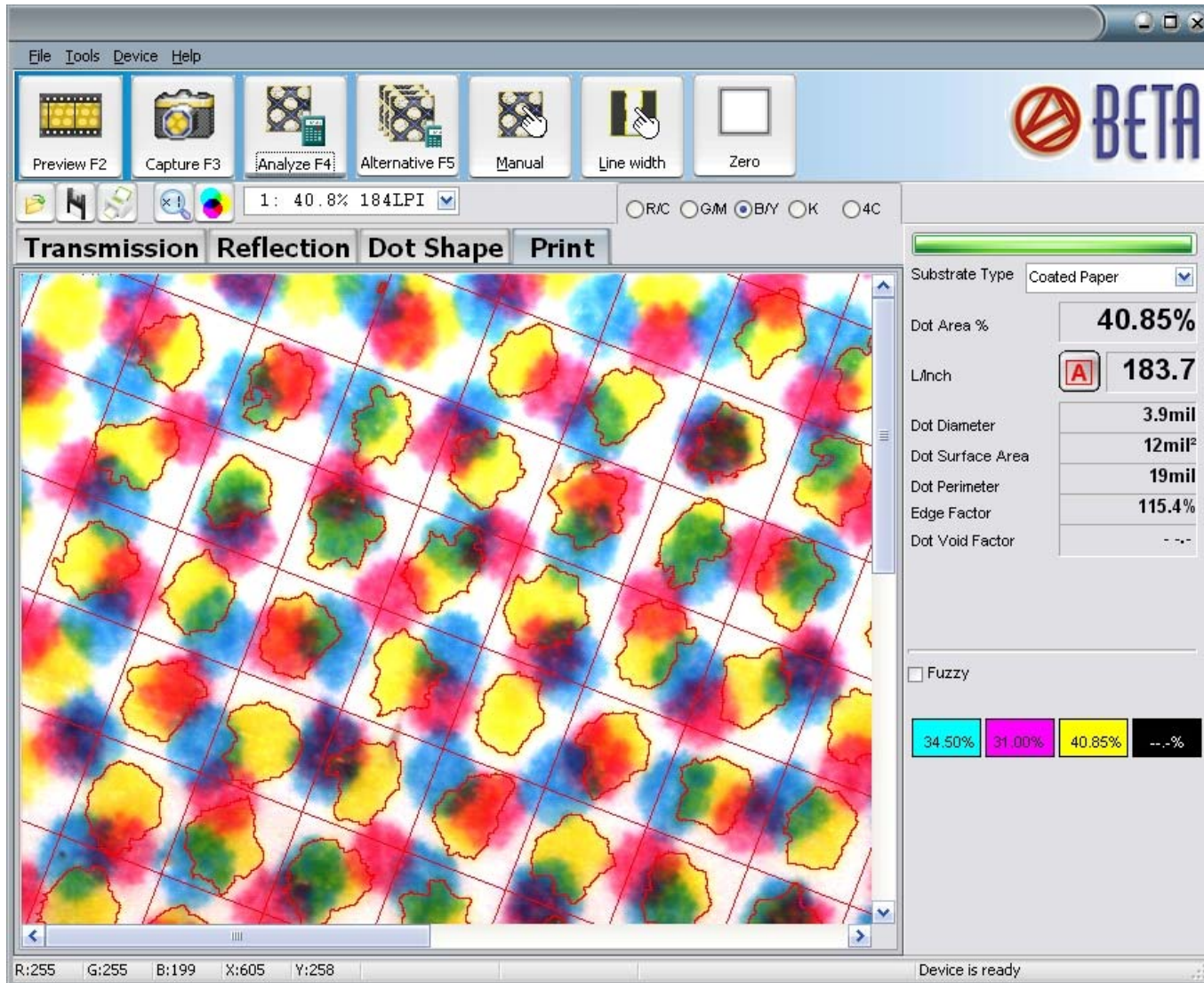
Image Color Separation & Analysis



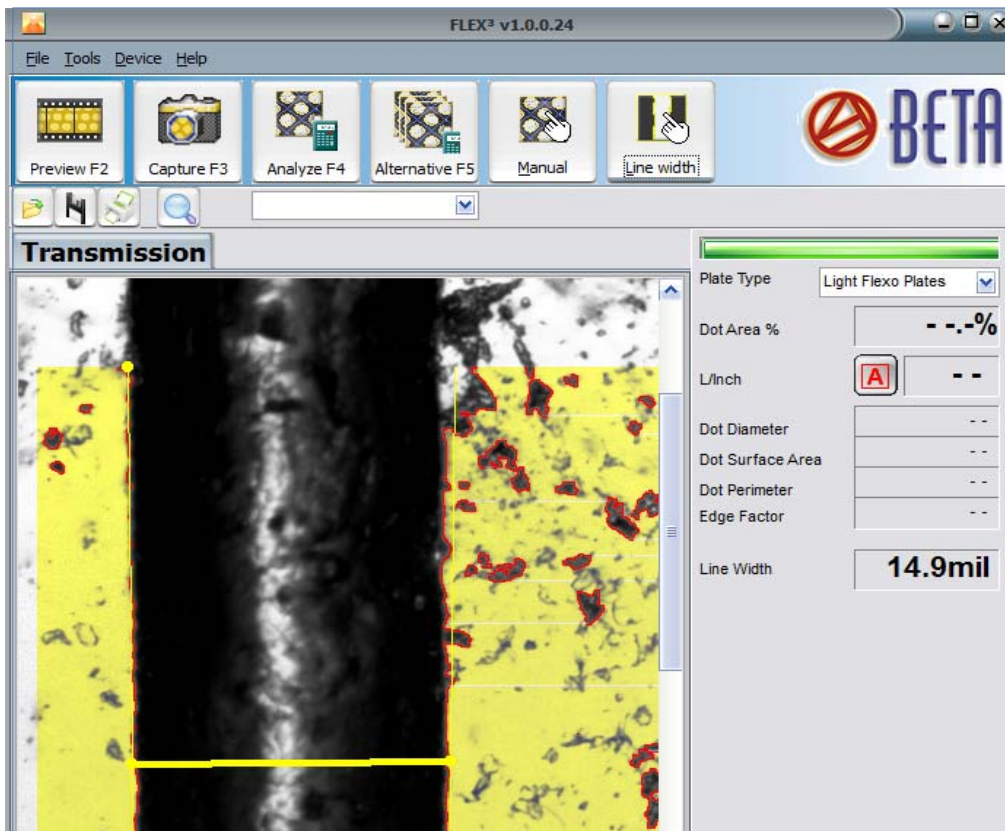
from printed halftones. Separated and analyzed for true halftone dot area analysis & correction. **Useful when there is no area available for printed targets such as pharmaceutical or cosmetic printing.**

BETA FLEXPRO

Flexo System Analyzer



Bar Width Analysis



with automatic edge detection eliminates operator error and measures in compliance with industry standards.

BETA FLEXPRO

Flexo System Analyzer

FLEX³ v1.0.0.24

File Tools Device Help

Preview F2 Capture F3 Analyze F4 Alternative F5 Manual Line width

BETA

Transmission

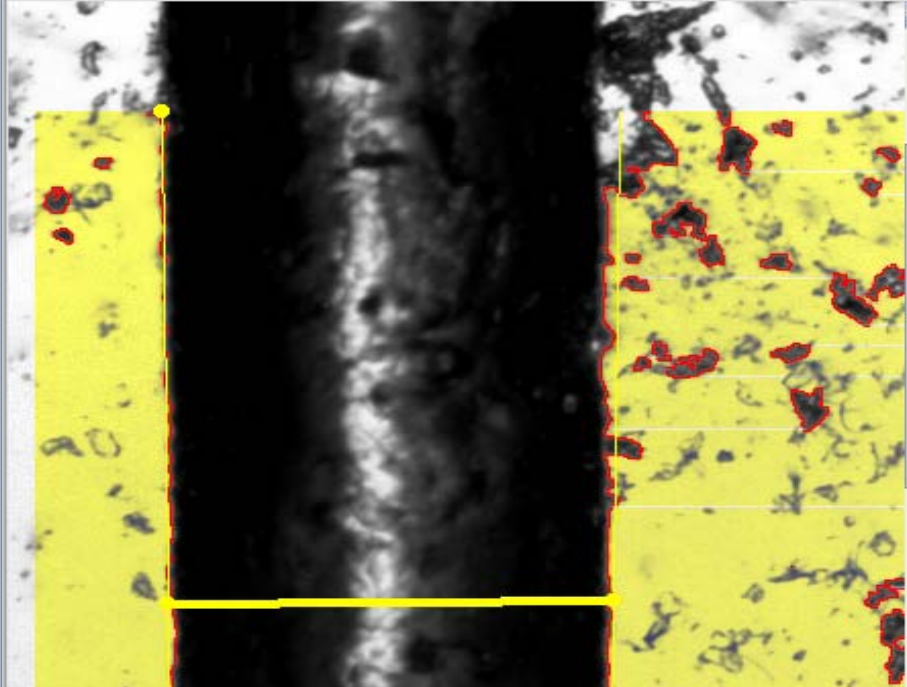


Plate Type: Light Flexo Plates

Dot Area %: - .-.-%

L/Inch: **A** - -

Dot Diameter: - -

Dot Surface Area: - -

Dot Perimeter: - -

Edge Factor: - -

Line Width: **14.9mil**

FUNCTION SUMMARY

- **3-D Imaging & Analysis (Pro Model Only)**
- DOT area%, diameter, perimeter surface area, edge factor
- AM & FM dot area • Line Width
- Mean, Range, Standard Deviation

SYSTEM REQUIREMENTS

- Windows 2000, XP, Seven
- 1 GB RAM • 1 GHz Processor
- USB2.0 port • 1024x768 display
- 100 MB for program & images

HARDWARE SPECIFICATIONS

- 1.3 MegaPixel mono camera
- USB powered • 1.7microns/pixel
- Self-contained case 6x8x15in.
- Weight 10lbs.

Betaflex PRO Sleeve Adapter



Add the sleeve adapter to the Betaflex PRO or Betaflex XPress and conveniently measure the widest range of translucent sleeves.

Dual transmission illuminators produce sharp, high-contrast images for accurate halftone dot analysis.

Illumination:

- Two collimated transmission light sources, one near each end of the sleeve support
- White, Red, Green, and Blue reflection light sources mounted within the sensor
- 3D mode illuminator mounted within the sensor

Format:

Cut off: 12" to 49" (300mm - 1250mm)
Diameter: 3.75" to 15.7" (95.5mm - 398mm)
Width: Maximum 80" (2000mm)

Other New Features Unique to Betaflex Pro

- **MASK STAIN DENSITY**, required for laser power, focus, and scan alignment on all CTP hardware. This feature eliminates the need to purchase and maintain a transmission densitometer for this purpose.
- **ONE STEP CALIBRATION**, faster and easier than the nine-step procedure on current systems. One image capture recognizes four halftone targets, measures them, and prints a calibration report.
- **REMOTE SENSING**, the sensor head can be removed from the supporting arm and used in reflection mode for print analysis on flat prints. The available cylinder mount allows the head to be positioned on a cylinder or turning bar for examination of a stationary web.
- **LARGE PLATE MOUNT** (Coming Soon) will allow measurements to be taken 30 inches from the edge of a flat plate. A supporting arm structure and separate light source will be provided with installation instructions. This will allow the user to create an integrated plate analysis station within their existing plate handling equipment.

FREE BETACOLOR VIEWER 3, 10x W/UV

**MUST HAVE FOR VIEWING
FLEXO PRINTING**



**World Standard for Color Evaluation
Value \$439 (USD) Free w/Purchase
& Trade In.**

- **Visual CMYK Color Contrasting**
- Increased Contrast of All Colors, especially the difficult to see **YELLOW APPEARS ALMOST BLACK.**
- Easily See Register, Slur, Doubling, Ink to Water Balance, Etc.
- New UV Channel to see metamerism (light influenced color shifts)