

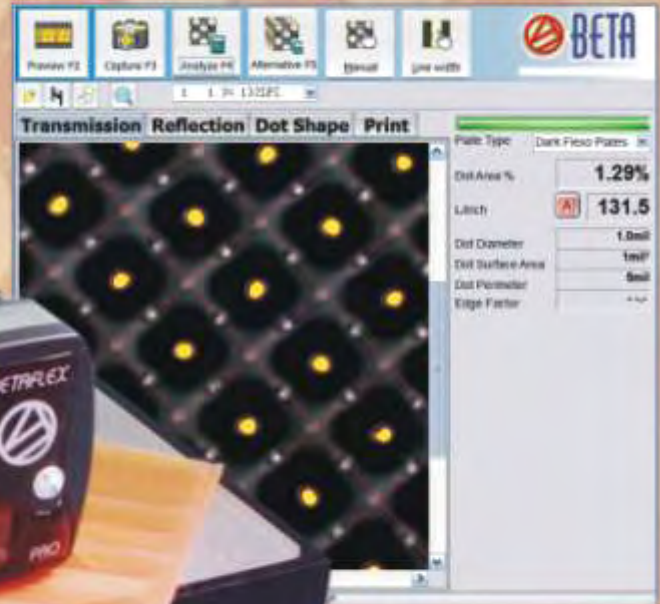
BETA FLEXPRO

Flexo System Analyzer

The Precise &
Productive
Tool For
Today's Flexo

Measure:

- Flexo Plates • Laser Masks • Film
- Offset Plates • Prints
- Stain Density
- HD FLEXO



Verify:

- Halftone Dot Area
- Screen Frequency
- Bar Code Line Width

NEW!

DOT STRUCTURE INDEX

Topographical Visualization
and 3-D Imaging Assures
Highlight Dot Integrity

Catch Expensive Errors
Before they Propagate
Through the System

SAVE • TIME • MONEY • MATERIAL

The Key to High Quality Flexo



 **BETA INDUSTRIES**
The Quality Control Company

Contact Beta or Your Dealer
for a **Free 10-Day Trial**
www.betascreen.com
www.betascreen.net

707 Commercial Ave. Carlstadt, NJ 07072 USA Tel: 201-939-2400, 800-272-7336

BETA FLEXPRO

Flexo System Analyzer

The Benefits Detect process variation before expensive errors propagate through the system. Automatic data collection, plotting, and statistical analysis keeps the operator informed and the process on target. The built-in calibration function and target system provides maximum accuracy and inter-instrument agreement across the plant and around the world.

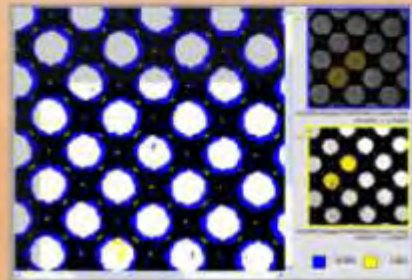


Image Comparison function auto-matically rotates, scales, and overlays images to display and measure differences in dot area. See dot size change from mask to plate to print, plant to plant, or week to week. See changes in the process or materials, the plant or the method before expensive errors propagate through the system.

The Problem - Process variability, uncertain results, wasted material

The Solution - The BetaFlex system simplifies process control with a familiar interface, unparalleled accuracy, and a powerful toolbox of functions.



Image Color Separation & Analysis from printed halftones, separated and analyzed for true halftone dot area analysis & correction. Useful for printing without targets.



Bar Width Analysis with automatic edge detection eliminates operator error and measures in compliance with industry standards.

Sample Types	Betaflex PRO	Betaflex XPress
Halftone Film, Pos. & Neg.	■	■
Laser Ablation Masks	■	■
Transparent Flexo Plates	■	■
Opaque Elastomer Plates	■	■
Offset Plates, Paper, Film Color Prints	■	■
Camera & Illumination Hardware		
Camera USB2.0	1.3MPixel	1.3MPixel
2D TOP VIEW Image resolution	14000ppi	14000ppi
3D OBLIQUE VIEW Image resolution		22000ppi
Transmission Mode	■	■
Reflection RGB & White Mode	■	■

- SYSTEM REQUIREMENTS**
- Windows 2000, XP, Seven
 - 1 GB RAM • 1 GHz Processor
 - USB2.0 port • 1024x768 display
 - 100 MB for program & images

- HARDWARE SPECIFICATIONS**
- 1.3MegaPixel mono camera
 - USB powered •1.7microns/pixel
 - Self-contained case 6x8x15in.
 - Weight 10lbs.

- FUNCTION SUMMARY**
- DOT area%, diameter, perimeter surface area, edge factor
 - AM & FM dot area • Line Width
 - Mean, Range, Standard Deviation

Sample Types

- Halftone Pos. & Neg. Film
- Laser Ablation Mask
- Transparent Flexo Plates
- Opaque Elastomer Plates
- Offset Plates
- Color Print on Paper & Film



Camera Hardware

- Camera USB2.0
- 2 D TOP VIEW Image resolution
- 3 D OBLIQUE VIEW Image resolution

1.3MPixel
1.7µ/Pixel

1.3MPixel
1.7µ/Pixel
1µ/Pixel

Illumination

- Transmission
- Reflection RGB & White
- 3D Illumination



Measurement Results and Functions

- Dot Area 0.5%..98% % in 0.01%
- Screen ruling
- Dot Diameter 0.1 µ / 0.1mil
- Dot Surface Area 1µ² / 1mil²
- Dot Perimeter & Edge Factor µ / mil
- Mask Stain Density
- Auto Line Width by click in 0.1 µ / 0.1mil
- Auto, Manual, & Preset screen ruling
- Fast alternative selection with drop down list
- Full FM Screen Analyses
- Manual Dot selection by click
- Local Magnifier function
- Native Image Comparison
- 2D Distance measured w/ruler 0.1 µ / 0.1mil
- 2D Angle measurement with ruler in 0.1ø
- Dot Structure Index
- Dot Diameter at -10µ, -30µ, -60µ depth
- 3D Minimum Dot Display
- 3D Diameter, Height, Angle 0.1 µ / 0.1mil, 0.1ø
- Full Image Exchange between devices

50LPI-300LPI

50LPI-300LPI



Statistical Functions & Report Generator

- Dot Area Plot
- Mean, Standard Deviation
- Data Import and Export
- Configurable Report with include/exclude list
- Measurement data or images

