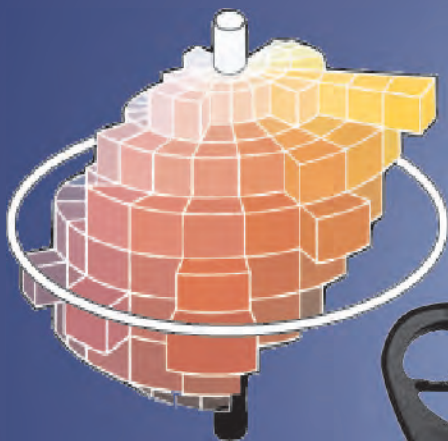


# BETACOLOR 2000

## SPECTRO-DENSITOMETER

L '100'



L '0'



Spectrophotometer



Y M C K



O G B

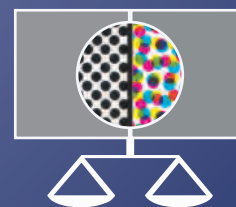


25% 50% 75%



Y/M Y/C C/M

GRAY BALANCE



7 Color  
Densitometer

Laboratory Precision For The Pressroom Environment

**FREE 10 Day Trial**

**BETA INDUSTRIES**  
The Quality Control Company



707 Commercial Ave. Carlstadt, NJ 07072

Tel: 201-939-2400 800-272-7336

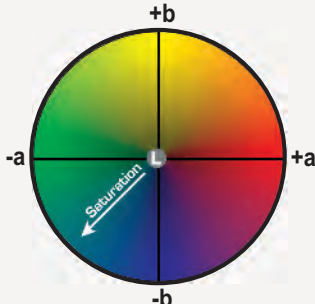
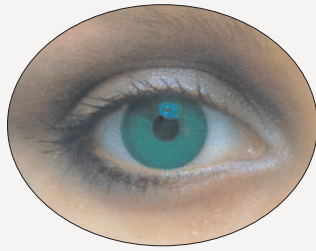
www.betascreen.com Fax: 201-939-7656



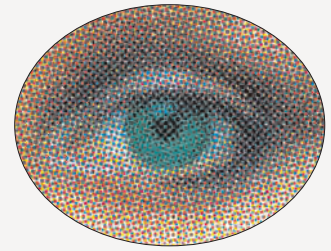
# BETACOLOR 2000

# SPECTRO DENSITOMETER

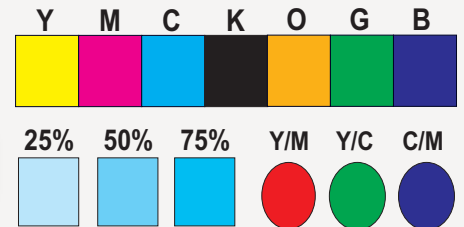
Measure GRACol G7™ & Pantone™



Spectral Data



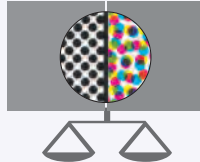
### Densitometer Data



## FUNCTIONS

- CIE L\*a\*b\* CIE L\*C\*h° CIE xyY
- Illuminate D50, 2° - Delta E
- 9 Spectro Memory Programs
- 7 Density Channels
- Hue Error, Grayness, Relative Print Contrast

### GRAY BALANCE



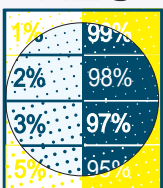
- Automatic Zero Calibration
- Automatic 7 Color Recognition
- Automatic Density, Automatic Dot Gain at 3 Levels
- Automatic Dot Area
- Automatic Trapping

## TECHNICAL SPECIFICATIONS

Density Range .....0.00 - 2.50  
 Density Repeatability .....+/- 0.003  
 Percent Dot Area .....0-100%  
 Measuring Time .....0.4 sec.  
 Linearity .....+/- 1%  
 Filters ..... Status T, Status I, (DIN 16536)  
 Polarization .....Optional for density  
 Aperture .....3.3mm (1.8mm optional)  
 Serial Interface .....RS232

Multi-Language Digital LCD Display Density  
 4.75mm high 4 lines 16 characters  
 Light Source .....multi LED's  
 Measurements / Battery Set .....300.00  
 Power Source .....4-1.5V AA Alkaline Batteries  
 Detector .....Photodiode  
 Weight .....14 oz. [390 grams]  
 Dimensions. 5.75x3.3x1.9in.[145x83x48mm]  
 Housing .....Fiberglass reinforced ABS

## BETACOLOR VIEWER



See The Nearly Invisible Yellow As Small As 1%

The Perfect Companion For The BetaColor 2000

The World Standard For Viewing Color